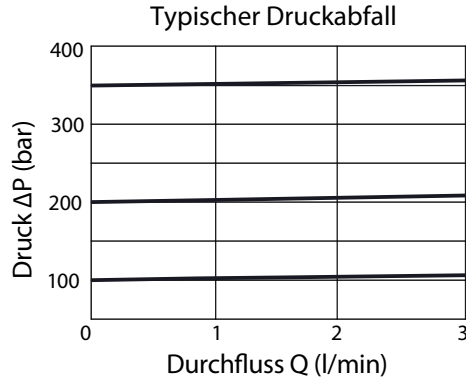
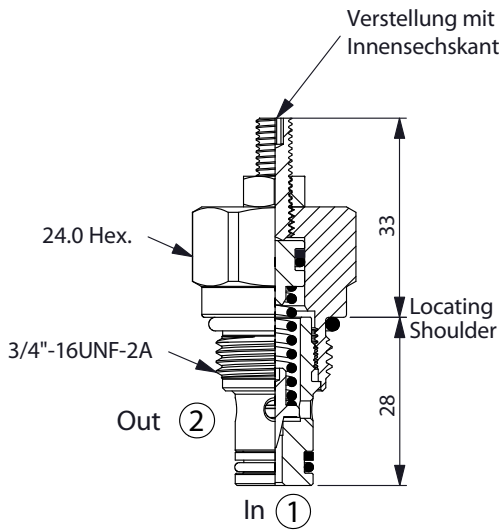
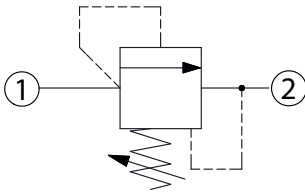


RD-08W – Fördervolumen 3 l/min

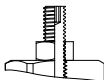
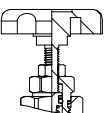


Technische Daten

- Betriebsdruck $p = 420$ bar
- Fördervolumen $Q = 3$ l/min
- **Stufenbohrung = 08W-2**
- Anziehdrehmoment = 25-35 Nm
- Gewicht = 0.10 kg



Typenschlüssel

RD-08W	-	X	-	Y	-	Z
Basiscode	Funktion		Verstellbereich		Optionen	
	23	Direct Acting 1-2 (P-T)	A	35-210 bar	L	Verstellung mit Innensechskant 
	Ansprechzeit (2 ms) max. Leckage (0.2 cc/min.) Schmutz tolerant		B	22-105 bar	F	Handrad mit Kontermutter 
			C	70-420 bar		
			D	10-55 bar		