

Ordering Code: **RC-10A-X-Y-Z**

PATENT PENDING

Control Option:
Maximum extension
from locating shoulder.
(L Control shown)

Ø19

22.2 Hex.
(7/8 inch)

M20x1.5

Outlet ②

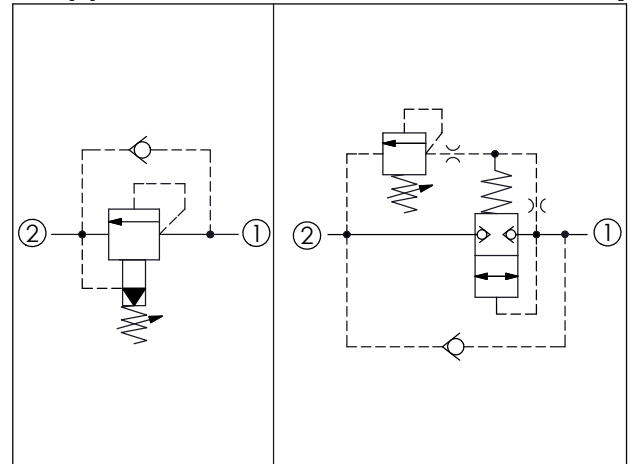
Inlet ①

Locating Shoulder

L=64
K=70

40

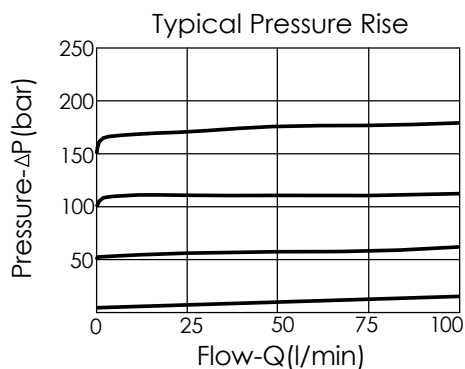
UNIT:mm



TECHNICAL DATA

Max. Setting:	420	bar
Rated flow:	95	l/min
Cavity-Tooling:	10A-2	
Installation torque:	40-50	Nm
Weight:	0.15 (Z:L)	kg

Will accept maximum pressure at port 2;
suitable for use in cross port relief circuits.

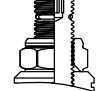


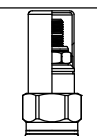
X OPERATION

2G Balanced Poppet

Maximum Leakage (15 cc/min./70 bar)
(46 cSt, 40°C)

Z OPTIONS

L Leakproof hex. socket screw. 

C Stainless Steel Tamper Resistant Cover. 

K Handknob with Lock Knob. 

T Three-winged Handknob Kit. 

Y

SPRINGS

ADJUSTMENT RANGES

A	7-210 bar (70 bar Standard Setting)
B	3.5-105 bar (70 bar Standard Setting)
C	10.5-420 bar (70 bar Standard Setting)
D	1.7-55 bar (28 bar Standard Setting)
E	1.7-28 bar (14 bar Standard Setting)

※ Port ② to Port ① Check Valve Cracking Pressure 0.3 bar