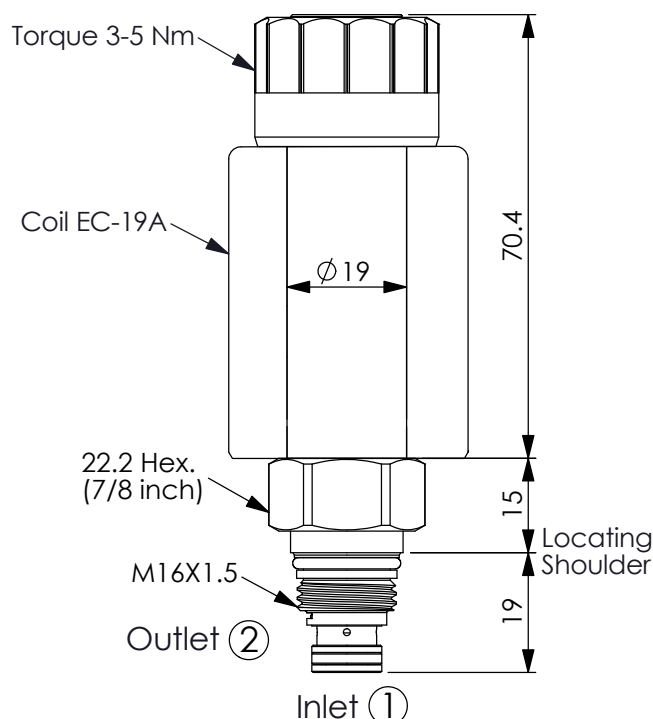


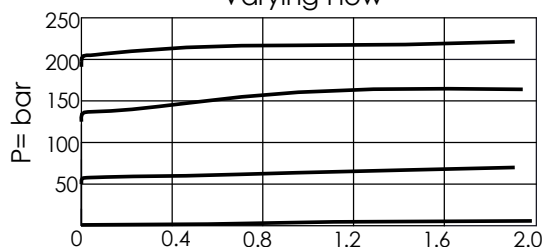
PILOT CONTROL VALVE (Electro-Proportional Pilot Relief)

Ordering Code: **PRB-8A-X-Y-Z**

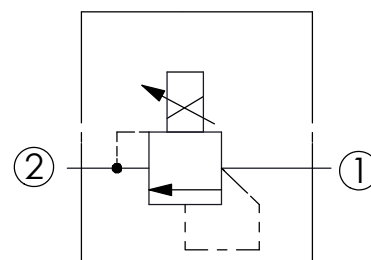
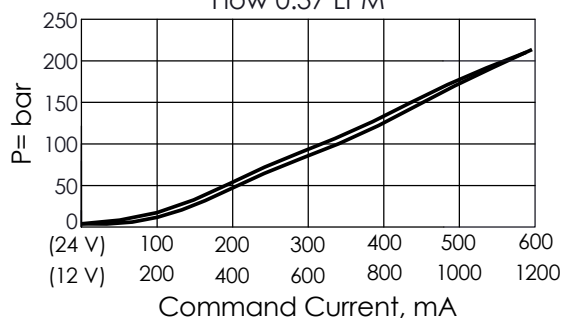


UNIT:mm

Constant Command
Varying Flow



Pressure v.s Command
Flow 0.37 LPM



TECHNICAL DATA

Max.Operating pressure: 350 bar

Rated flow: 1 l/min

Cavity-Tooling: 8A-2

Installation torque: 27-33 Nm

Weight: 0.16 kg (Without Coil)

Coils must be ordered separately

Maximum Valve Leakage at Reseat: 25 c.c./min

Back pressure on the tank port (port 2) is directly additive at a 1:1 ratio to valve setting

Hysteresis with DC input < 8%

Hysteresis with dither < 4%

Linearity with dither < 2%

Dither should be adjustable between 80-300Hz (Recommended dither frequency 140Hz)

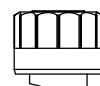
Reseat exceeds 85% of cracking pressure.

X OPERATION

2D 2 Ports 、22 Watt. Coil
 $\phi 19$ mm tube

Z OPTIONS

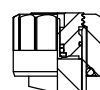
N Non-adjustable



M Manual Override



P Push Style Manual Override



Y

CONTROL PRESSURE RANGES

A

20 to 210 bar

B

10.5 to 105 bar

D

3.5 to 50 bar

W

35 to 350 bar