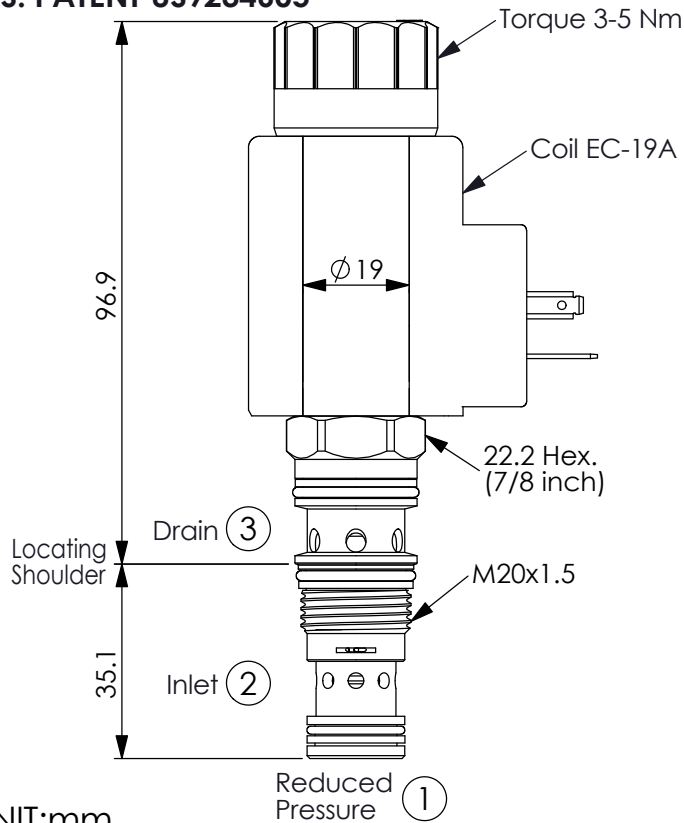


REDUCING/RELIEVING VALVE

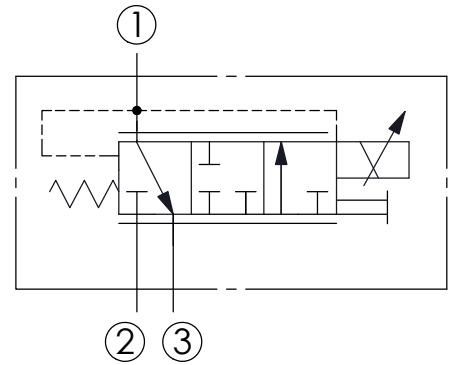
(Electro-Proportional, Direct-Acting,
Pressure Reducing/Relieving Valve, Improved Dynamic Response)

Ordering Code: **PPD-11A-X-Y-Z-74**

U.S. PATENT US9234605



UNIT:mm



TECHNICAL DATA

Max. Operating pressure: 350 bar

Rated flow: 20 l/min

Cavity-Tooling: 11A-3

Installation torque: 40-50 Nm

Linearity (with dither) <2%

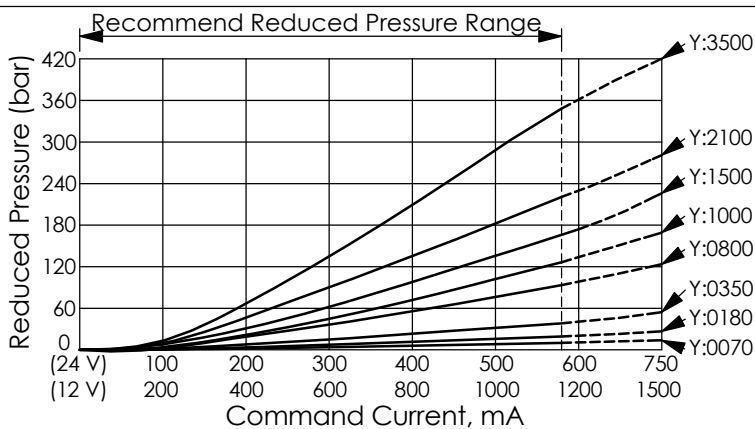
Repeatability (with dither) <2%

Hysteresis (with dither) <4%

Hysteresis with DC input <8%

Maximum valve leakage at 46 cSt = 40 cc/min.
Leakage specified is out of port 3 with a supply pressure of 210 bar and the valve set at mid-range.

Weight:(with Coil) 0.49 kg
(without Coil) 0.25 kg



Y	OPERATING RANGE	
	Rated Pressure	
0070	1~7 bar	
0180	1~18 bar	
0350	1~35 bar	
0800	2~80 bar	
1000	10~100 bar	
1500	10~150 bar	
2100	20~210 bar	
3500	35~350 bar	

When inlet pressure up to 210~350 bar
Recommend : Keep "Reduced Pressure" (Port ①)
minimum 30 bar to have best control.

Rev.160614

X	OPERATION	
3D	3 Ports 、22 Watt. Coil Ø 19 mm tube Recommend : The coil for proportional valve without VDR	

Z	OPTIONS	
N	Non-adjustable	
P	Push Style Manual Override	