

## REDUCING/RELIEVING VALVE

(Pilot Operated Reducing/Relieving)

Ordering Code: **PP-11A-X-Y-Z**

Control Option:  
Maximum extension  
from locating shoulder.  
(L Control shown)

Ø19

22.2 Hex.  
(7/8 inch)

L=64  
K=70

Tank ③

M20X1.5

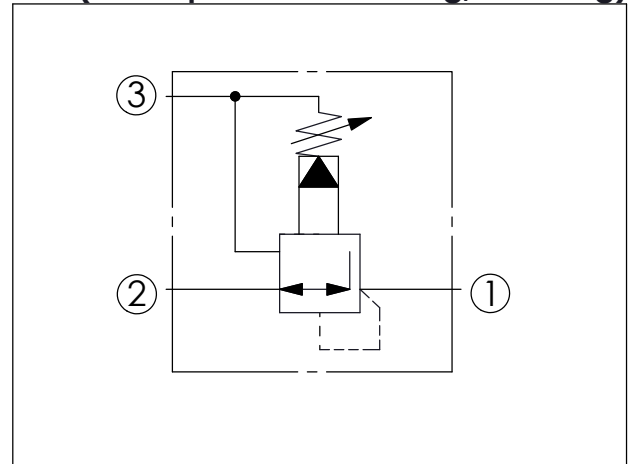
Inlet ②

Reduced Pressure ①

Locating Shoulder

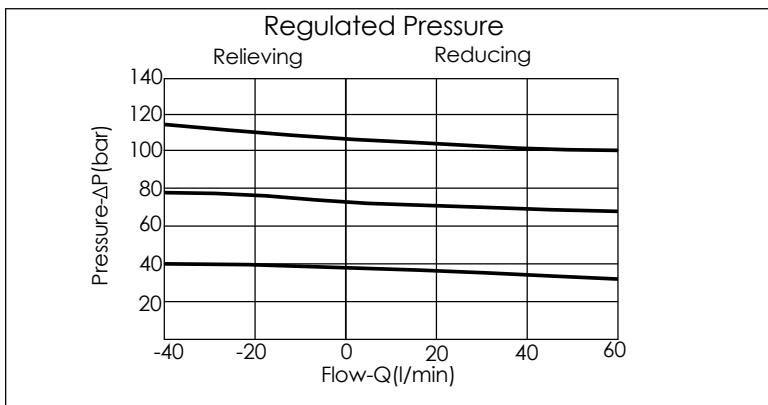
35.1

UNIT:mm



TECHNICAL DATA		
Max.Operating pressure:	350	bar
Rated flow:	40	l/min
Cavity-Tooling:	11A-3	
Installation torque:	40-50	Nm
Weight:	0.15	kg
Control Pilot Flow (0.11 ~0.16 L/min.)		

X	OPERATION	
30	Standard Type Low Leakage	
33	Option Type Improved Dynamic Response	
35	Impact Resistant Type (Without Filter)	



Y	SPRINGS	
	ADJUSTMENT RANGES	
A	7 to 210 bar (14 bar Standard Setting)	Maximum Differential=210 bar
B	3.5 to 105 bar (14 bar Standard Setting)	Maximum Differential=210 bar
D	1.7 to 55 bar (14 bar Standard Setting)	Maximum Differential=140 bar
E	1.7 to 28 bar (14 bar Standard Setting)	Maximum Differential=140 bar
N	4 to 55 bar (14 bar Standard Setting)	Maximum Differential=140 bar
Q	4 to 28 bar (14 bar Standard Setting)	Maximum Differential=140 bar
W	10.5 to 315 bar (14 bar Standard Setting)	350 bar inlet pressure

Z	OPTIONS	
L	Leakproof hex. socket screw.	
K	Handknob with Lock Knob.	
KF	Handknob with Panel Mount.	
LP	Leakproof hex. socket screw. With stainless steel external metal components	