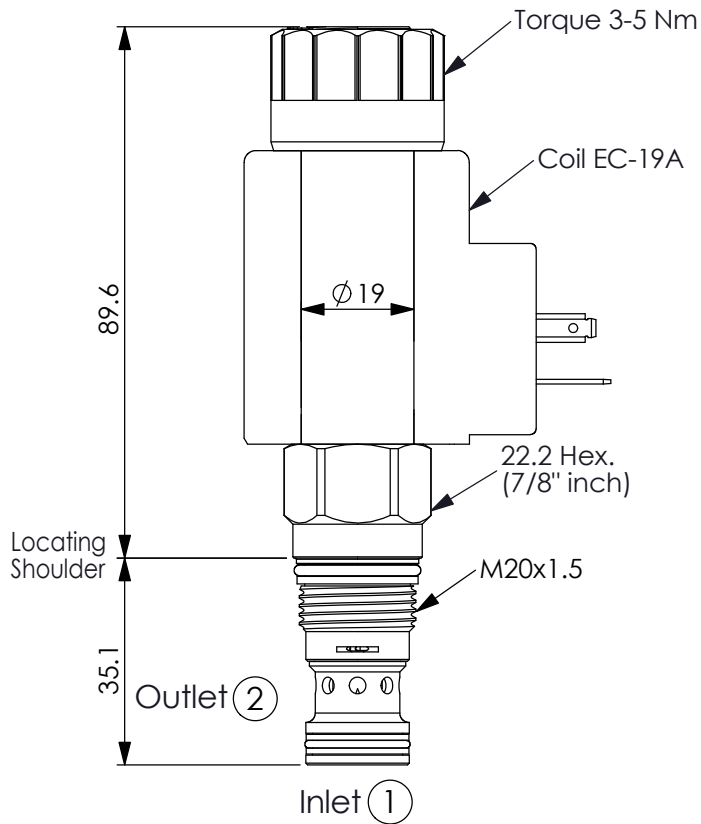


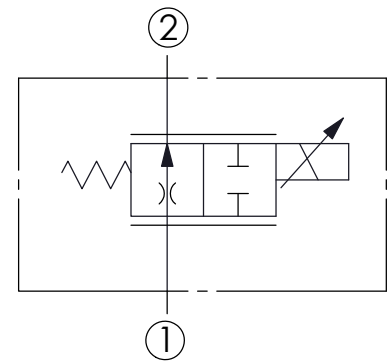
# FLOW CONTROL VALVE

(Electro-Proportional Flow Control Valve, Normally Open Throttle)

Ordering Code: **PFH-13A-X-Y-Z**



UNIT:mm



## TECHNICAL DATA

Max.Operating pressure: 350 bar

Rated flow: 28 l/min

Cavity-Tooling: 13A-2

Installation torque: 40-50 Nm

Linearity (with dither) <2%

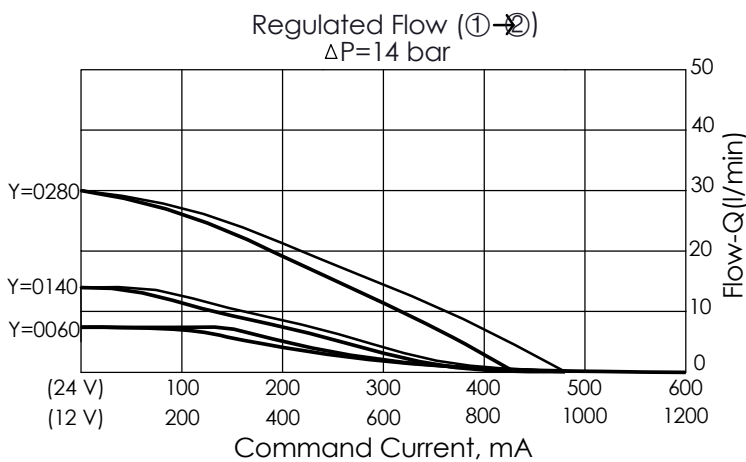
Repeatability (with dither) <2%

Hysteresis (with dither) <4%

Hysteresis with DC input <8%

Deadband, nominal (as a percentage of input) 25%

Weight:(with Coil) 0.53 kg  
(without Coil) 0.30 kg



If you need more information  
Please contact our sales department

Y	FLOW	
	NOMINAL CAPACITY	
0060	0.4~6 LPM	
0140	0.6~14 LPM	
0280	0.8~28 LPM (Standard)	

X	OPERATION	
2D	2 Ports 、22 Watt. Coil Ø 19 mm tube	

Z	OPTIONS	
N	Non-adjustable	
P	Push Style Manual Override	