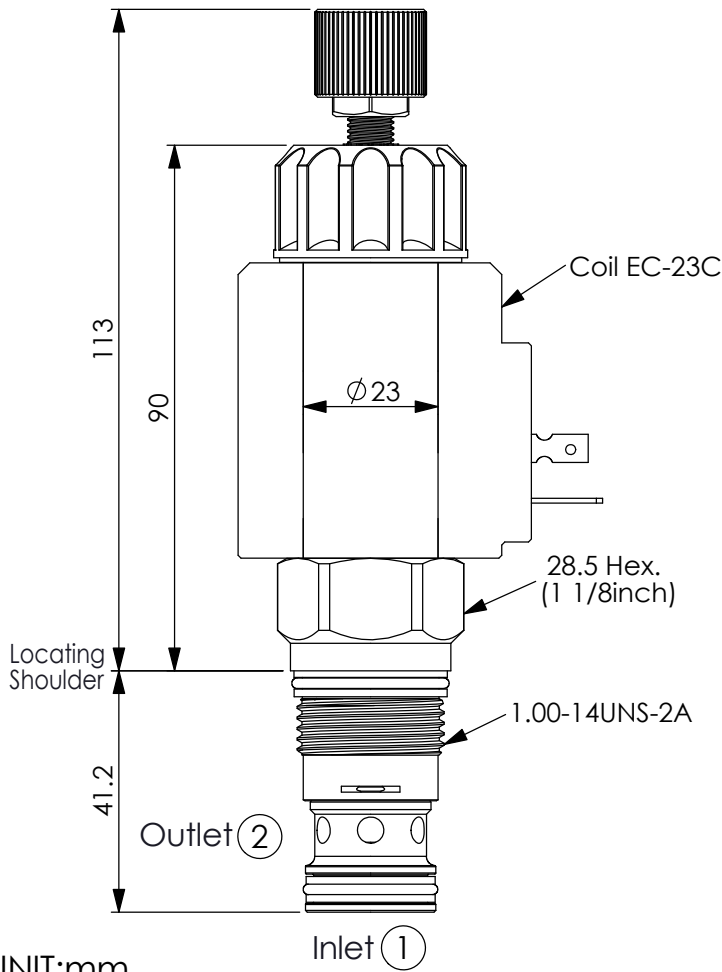
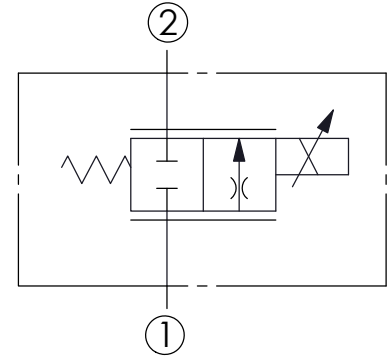


## FLOW CONTROL VALVE (Electro-Proportional Flow Control Valve, Normally Closed Throttle)

Ordering Code: **PFC-5A-X-Y-Z**

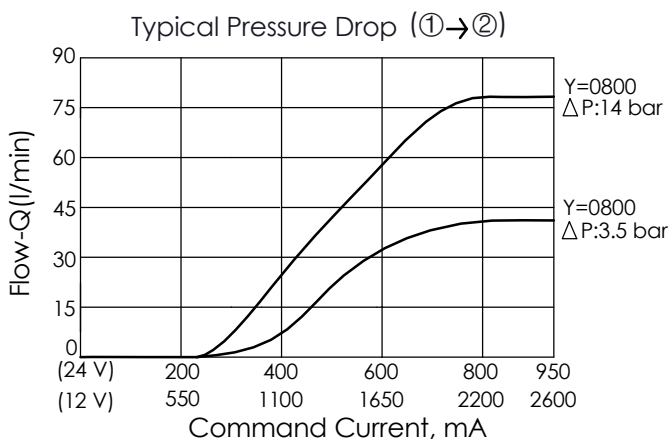
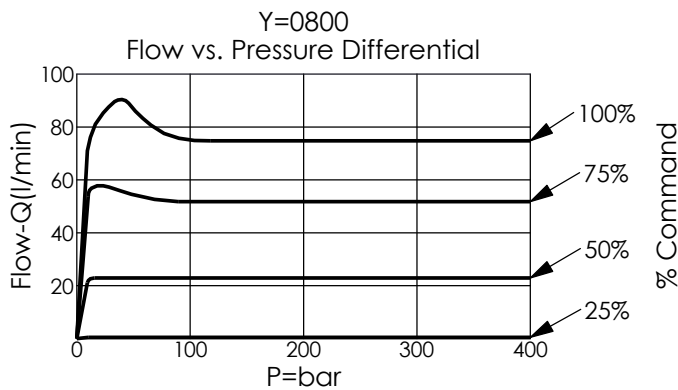


UNIT:mm



### TECHNICAL DATA

Max.Operating pressure:	350	bar
Rated flow:	80	l/min
Cavity-Tooling:	5A-2	
Installation torque:	60-70	Nm
Linearity (with dither)	<2%	
Repeatability (with dither)	<2%	
Hysteresis (with dither)	<4%	
Hysteresis with DC input	<8%	
Deadband, nominal (as a percentage of input)	25%	
Weight:(with Coil)	0.71	kg
(without Coil)	0.36	kg



<b>X</b>	<b>OPERATION</b>	
<b>2G</b>	2 Ports - 30 Watt. Coil $\phi$ 23 mm tube	

<b>Y</b>	<b>FLOW</b>	
	NOMINAL CAPACITY	
<b>0800</b>	80 LPM	

<b>Z</b>	<b>OPTIONS</b>	
<b>N</b>	Non-adjustable	
<b>M</b>	Manual Override	
<b>P</b>	Push Style Manual Override	