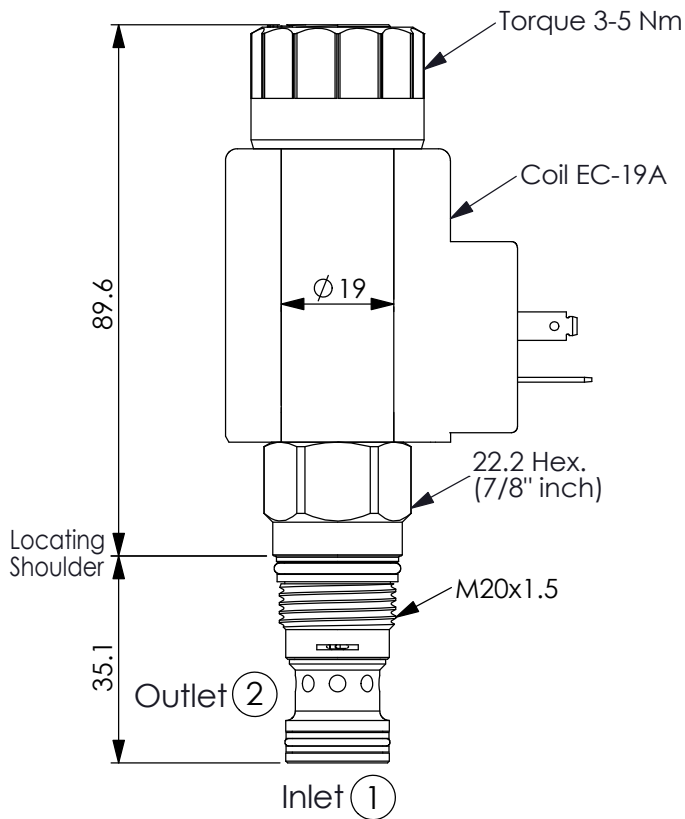
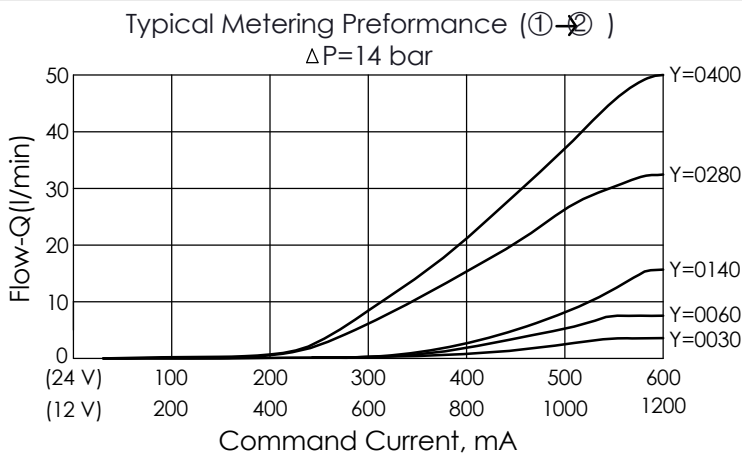


Ordering Code: **PFC-13A-X-Y-Z**

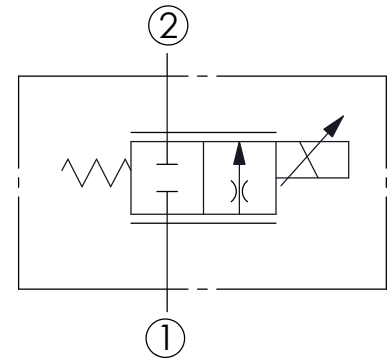


UNIT:mm



If you need more information  
Please contact our sales department

Y	FLOW	
	NOMINAL CAPACITY	
0030	0.4~3 LPM	
0060	0.4~6 LPM	
0140	0.6~14 LPM	
0280	0.8~28 LPM (Standard)	
0400	1~40 LPM	



### TECHNICAL DATA

Max. Operating pressure: 350 bar

Rated flow: 40 l/min

Cavity-Tooling: 13A-2

Installation torque: 40-50 Nm

Linearity (with dither) <2%

Repeatability (with dither) <2%

Hysteresis (with dither) <4%

Hysteresis with DC input <8%

Deadband, nominal (as a percentage of input) 25%

Weight:(with Coil) 0.53 kg  
(without Coil) 0.28 kg

X	OPERATION	
2D	2 Ports · 22 Watt. Coil φ 19 mm tube	

Z	OPTIONS	
N	Non-adjustable	
M	Manual Override	
P	Push Style Manual Override	