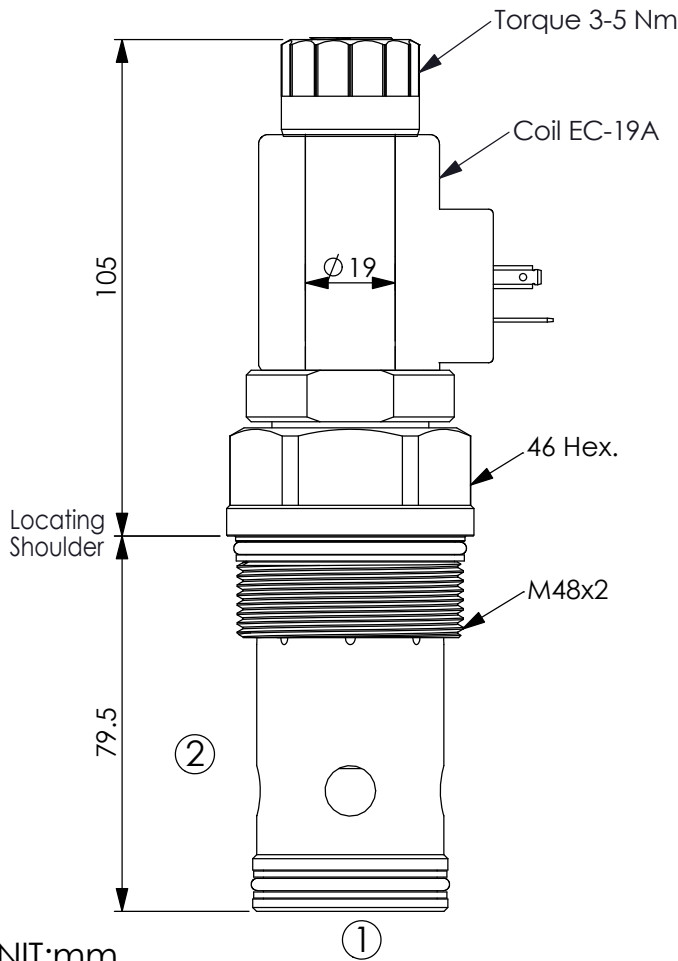
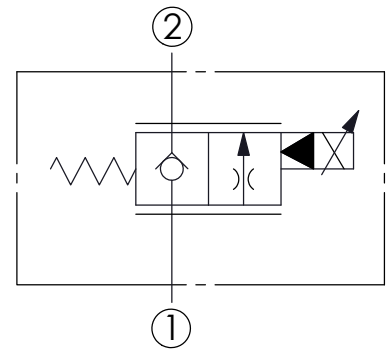


FLOW CONTROL VALVE (Electro-Proportional, Normally Closed)

Ordering Code: **PEV-18A-2D-X-Y-Z**



UNIT:mm



TECHNICAL DATA

Max.Operating pressure:	350	bar
Rated flow:	320	l/min
Cavity-Tooling:	18A-2	
Installation torque:	200-215	Nm
Weight:(with Coil)	1.49	kg
(without Coil)	1.25	kg
Fluids-Temperatures:	-40~120	°C

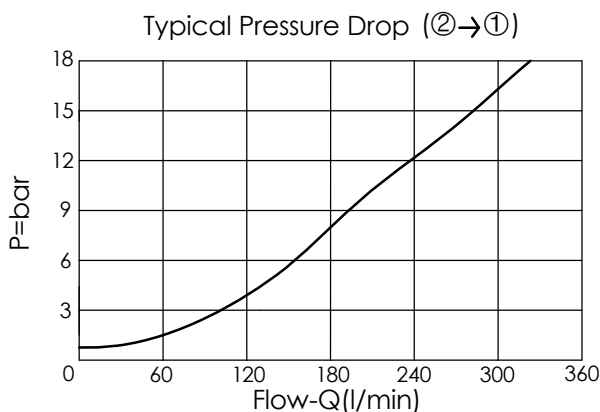
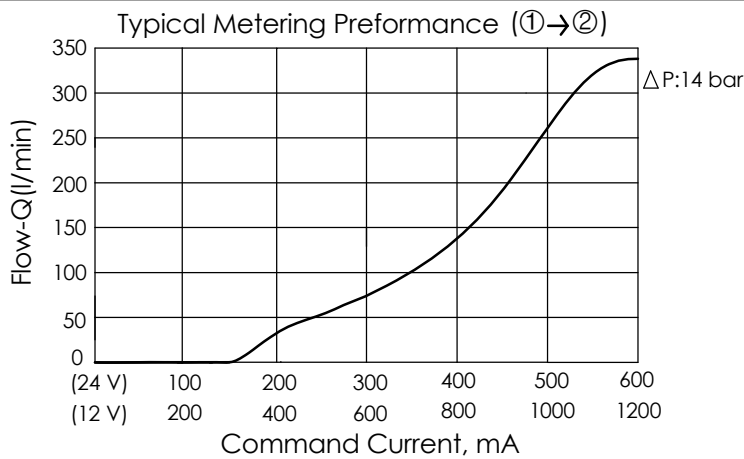
Leakage at ΔP of 140 bar
50cc/minute maximum

Typical hysteresis less than 4% of rated current at 10 bar pressure drop - Pulse Width Modulated(PWM)

Recommended PWM frequency 60-150 HZ, application dependent, 140 HZ typical

Coils must be ordered separately

2 Ports - 22 Watt. Coil $\phi 19$ mm tube



X	OPTIONS	
09	Normally-Closed, No Reverse Flow Energized, Nose-in, Side-out Operation	

Y	OPTIONS	
N	Non-adjustable	
P	Push Style Manual Override	

Z	FLOW	
	NOMINAL CAPACITY	
3200	0-320 LPM	