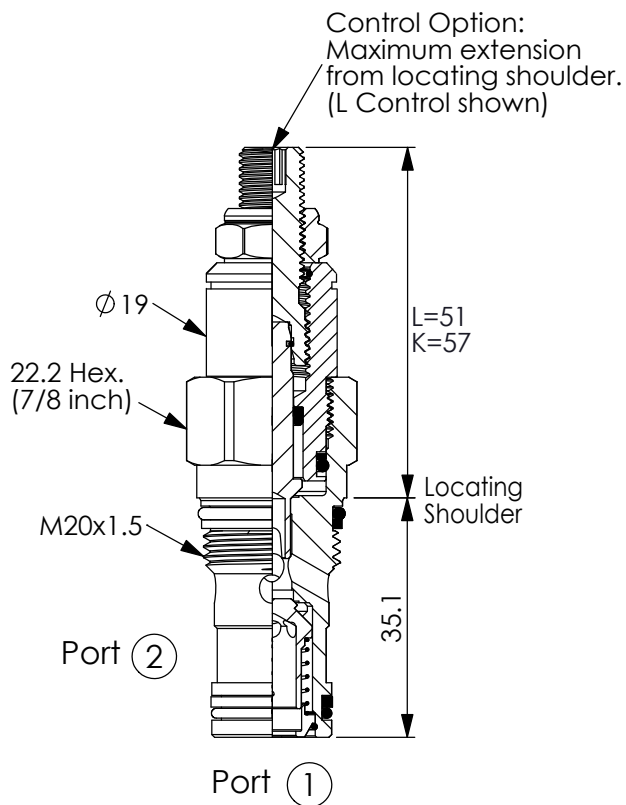
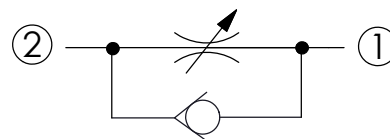


Ordering Code: **NC-13A-X-Y-Z**



UNIT:mm



TECHNICAL DATA

Max.Operating pressure: 350 bar

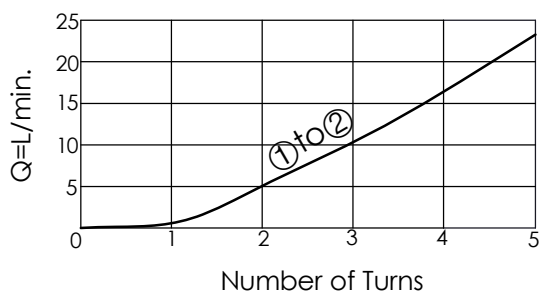
Rated flow: 25 l/min ($\Delta P=7$ bar)
See Performance Chart

Cavity-Tooling: 13A-2

Installation torque: 40-50 Nm

Weight: 0.14 kg

Adjustment Sensitivity at 7 bar Differential



X OPERATION

21 2 to 1 (Free Flow)

Y

OPTIONS

Maximum
Nominal Orifice

Cracking Pressure

BA

Ø 4.8 mm

0.3 bar

BC

Ø 4.8 mm

2.0 bar

CA

Ø 2.3 mm

0.3 bar

CC

Ø 2.3 mm

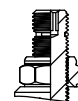
2.0 bar

Z

OPTIONS

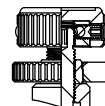
L

Leakproof hex.
socket screw.



K

Handknob with
Lock Knob.



T

Three-winged
Handknob Kit.

