

### TECHNICAL DATA

Aluminum Body Pressure Rating: 210 bar

Ductile Iron

Body Pressure Rating: 350 bar

Cavity:  
Refer to 11A3

\* Refer to Winner Cartridge Valves Catalog.

Aluminum	0.69 kg(WITHOUT VALVES)

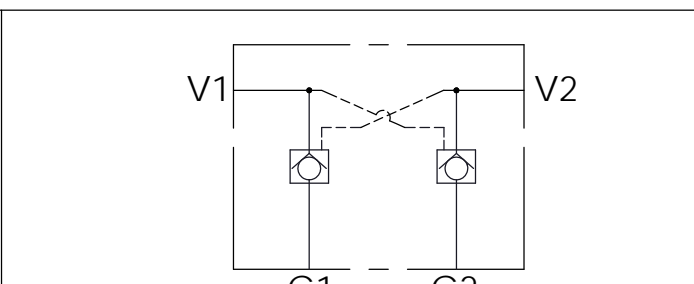
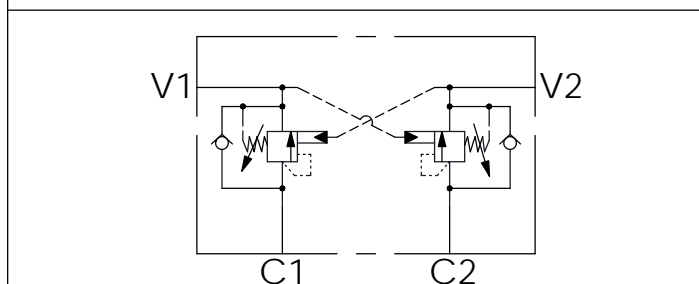
\* If you need the special specification.  
Please contact us.

Z	PORT SIZE		
	PORTS V1,V2	PORTS C1,C2	
G02	G 1/4"	G 1/4"	
G03	G 3/8"	G 3/8"	
G04	G 1/2"	G 1/2"	
A02	1/4"NPT	1/4"NPT	
A03	3/8"NPT	3/8"NPT	
S06	SAE 6	SAE 6	
S08	SAE 8	SAE 8	

X	SELECTION FOR V1 PORT CONTROL	
11A3	CAVITY ONLY(WITHOUT VALVE)	
CB3H	CB11A33HL (3:1 , 280bar)	
CO20	CO11A3020N (2.0bar)	

Y	SELECTION FOR V2 PORT CONTROL	
11A3	CAVITY ONLY(WITHOUT VALVE)	
CB3H	CB11A33HL (3:1 , 280bar)	
CO20	CO11A3020N (2.0bar)	

### HYDRAULIC CIRCUITS(WITH VALVES)



Ordering Code: **ML-60-CDW-CB3H-CB3H-A01**

Ordering Code: **ML-60-CDW-CO20-CO20-A01**