

## Magnetspulen S8-356-G2

### Class H, 19.5 W

**OD.02.28 - X - Y - Z**

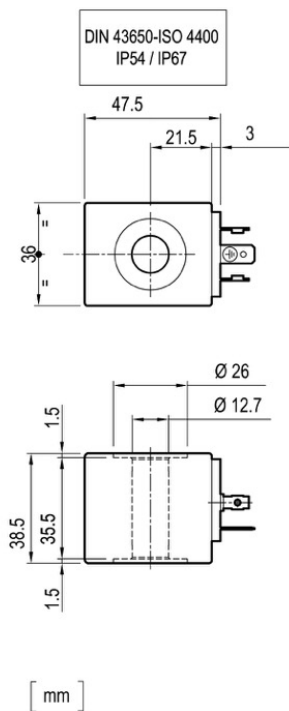
**Standardmodelle:**

OD.02.28-01-30-GA00

R934004894

OD.02.28-01-30-GV00

R934004895



X	Y	Connections	Circuit	Voltage
01	30	DIN 43650 - ISO 4400	Standard	DC - RAC

Z	Voltage V	Resistance Ohm (±7%)	Power W	Current A		ΔT °C (°F) 1 hour energized at Ta=20-25°C (68-77°F) Nominal voltage
	Nominal	Ta = 20-25°C (68-77°F)	Cold coil	Cold coil	Hot coil	
GV	230 DC	2697.73	19.5	* 0.075	* 0.058	95-100 (205-215)
GA	230 RAC	2179.39	19.5	* 0.087	* 0.064	

\* Note: current valves with Ta= 60 °C (140 °F)