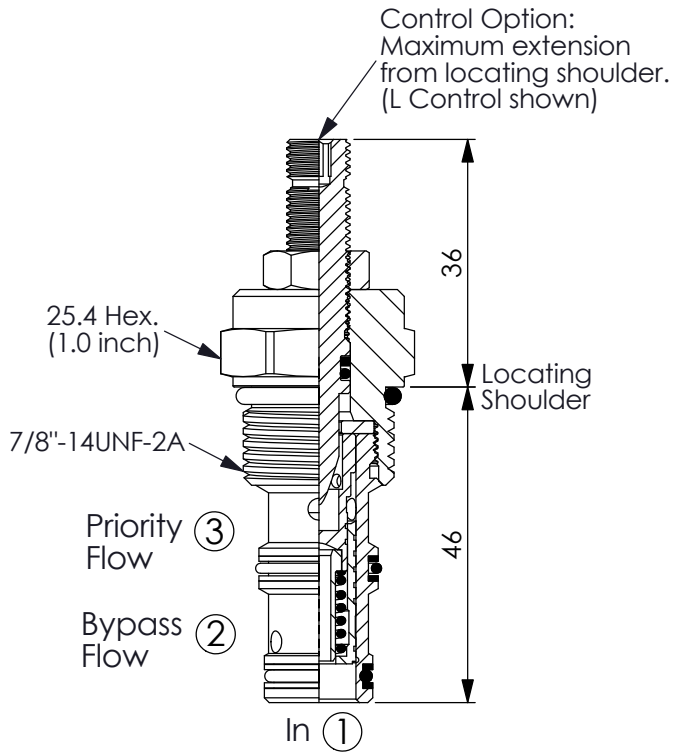
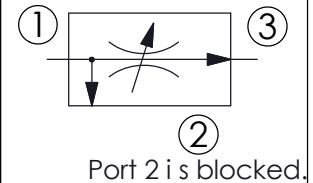
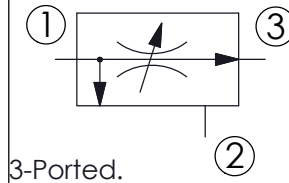
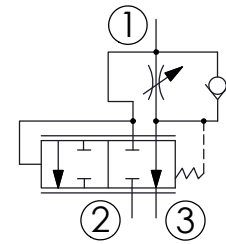
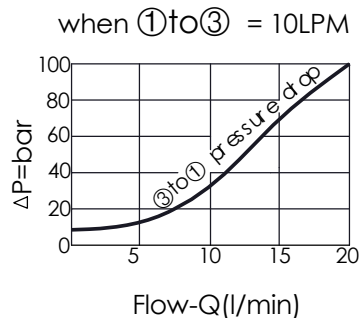
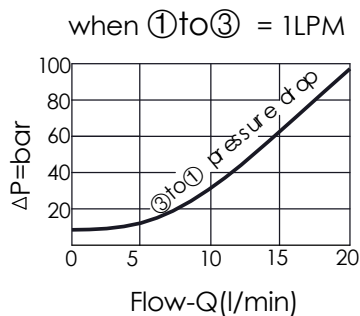
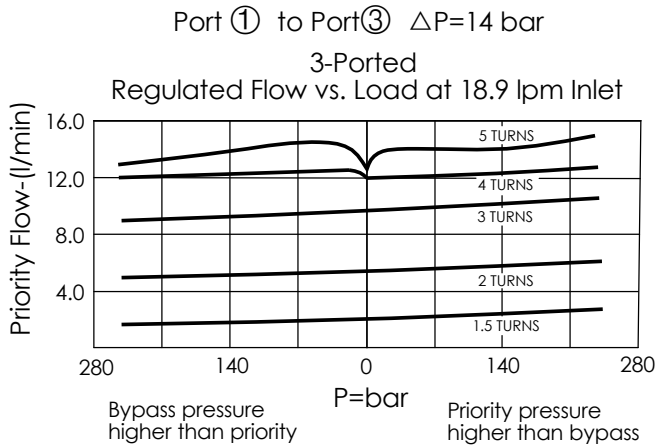


Ordering Code: **FR-10W-X-Y-Z**



UNIT:mm



TECHNICAL DATA

Max. pressure:	240	bar
Rated Input Flow:	3-ported : 0-19 lpm nominal 0-26 lpm max.	
Cavity-Tooling:	10W-3	
Installation torque:	35-45	Nm
Weight:	0.14	kg

Note: It can be used as a priority-type flow regulator or a restrictive-type 2-way flow regulator when the bypass port (port 2) is blocked.

X PRIORITY FLOW RANGE

31	Flow Rate :	
	3-ported regulated flow 0-13 lpm 2-ported regulated flow 0-12 lpm	

For Higher flow rates, see the FR-10W-33 valve

Y SPRING RANGE

N (Standard)

Z OPTIONS

L	Leakproof hex. socket screw.	
E	Handknob and locknut.	
B	Handknob and aluminum locknut.	
B1	Handknob and aluminum locknut.	
K	Handknob with Lock Knob.	