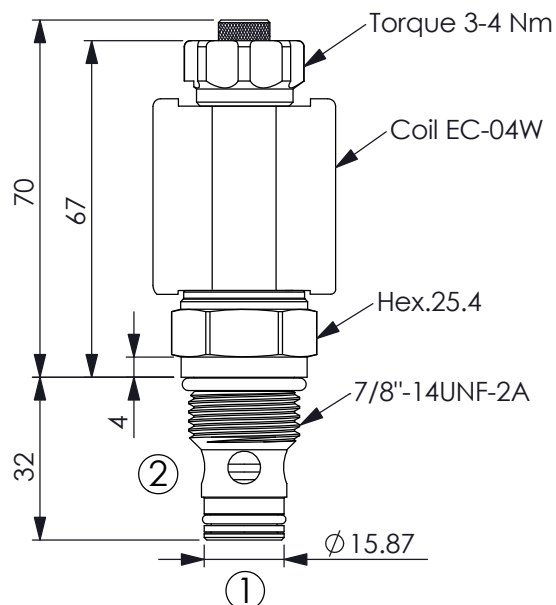


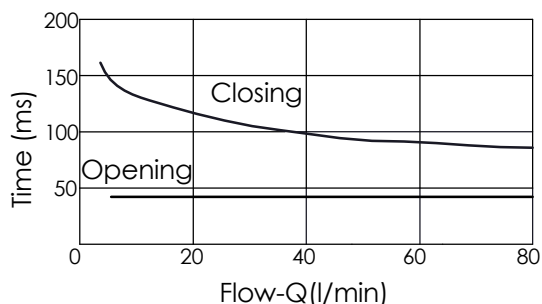
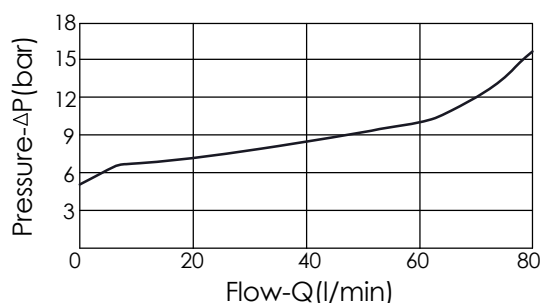
SOLENOID OPERATED VALVES

(Poppet 2-Way Normally-Closed Cartridge Style With Extra Spring)

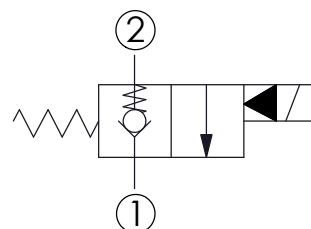
Ordering Code: **EP-10W-X-Y-Z-85**



UNIT:mm



This design allows faster response times with very small flow or even virtually zero flow.



TECHNICAL DATA

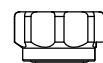
Max.Operating pressure:	350	bar
Rated flow:	70	l/min
Cavity-Tooling:	10W-2	
Installation torque:	44-56	Nm
Weight:	0.16	kg
Fluids-Temperatures:	-40~120	°C
Internal Leakage:	0.15cc/minute	
	(3 drops/minute) max.at 350 bar	
Filtration:	25 µm nominal or better	
Minimun Voltage Required:	90 % of nominal	
Coils must be ordered separately		
Mounting Position:	unrestricted	

X STRUCTURE

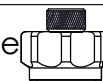
2A 2 Ports 、 20 Watt. Coil

Z OPTIONS

N Non-adjustable



M Screw-out Knob Style



Y OPERATION

01 Normally-Closed
No Reverse Flow Energized

When de-energized, the valve acts as a check vlave, allowing flow from①to②,while blocking flow from②to①. When energized,the cartridge's poppet lifts to open ②to①flow path. In this mode,flow from①to②is severely restricted. if this path is