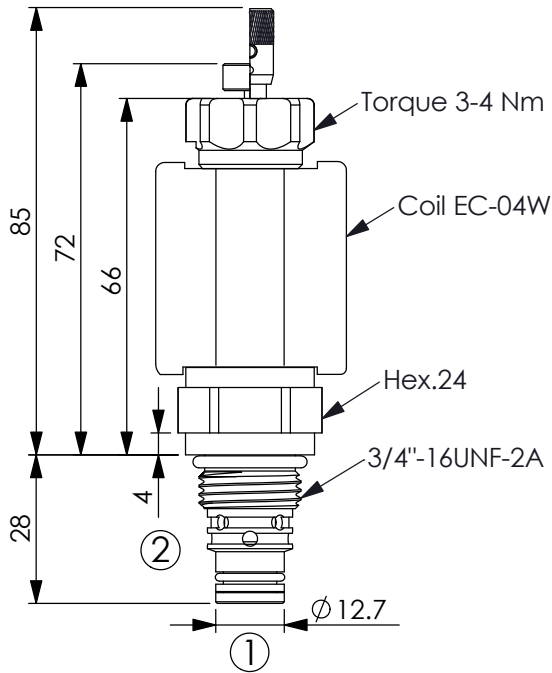
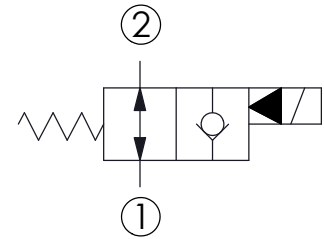
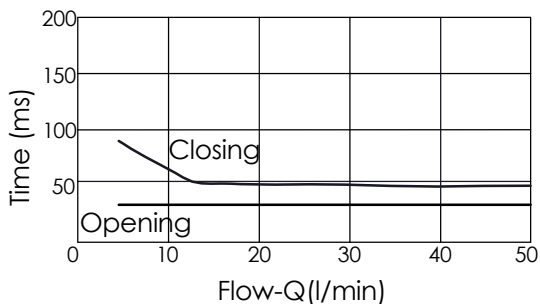
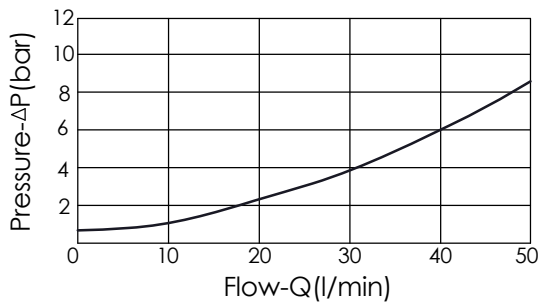


Ordering Code: **EP-08W-X-Y-Z-05**



UNIT:mm



TECHNICAL DATA

Max. Operating pressure: 350 bar

Rated flow: 40 l/min

Cavity-Tooling: 08W-2

Installation torque: 39-51 Nm

Weight: 0.13 kg

Fluids-Temperatures: -40~120 °C

Internal Leakage: 0.15cc/minute
(3 drops/minute) max.at 350 bar

Filtration: 25 μm nominal or better

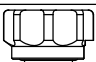
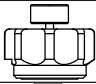
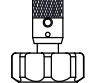
Minimum Voltage Required:
90 % of nominal

Coils must be ordered separately

Mounting Position: unrestricted

| X | STRUCTURE |
|----|-------------------------|
| 2A | 2 Ports - 20 Watt. Coil |

| Y | OPERATION |
|----|--|
| 06 | Normally-Open Reverse Flow De-Energized |

| Z | OPTIONS |
|---|--|
| N | Non-adjustable  |
| P | Push Style Manual Override  |
| T | Push and Twist Style Manual Override  |