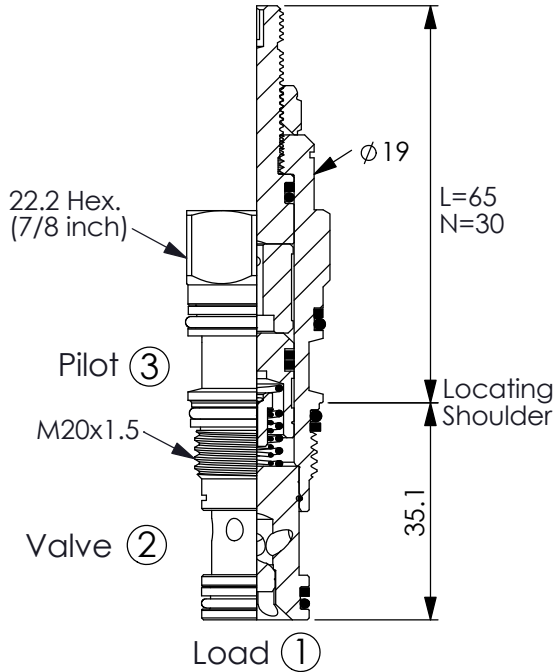
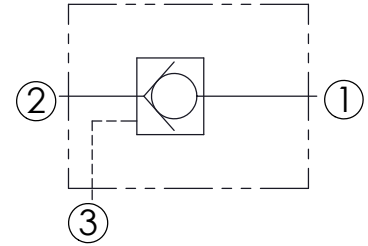


Ordering Code: **CO-11A-X-Y-Z**

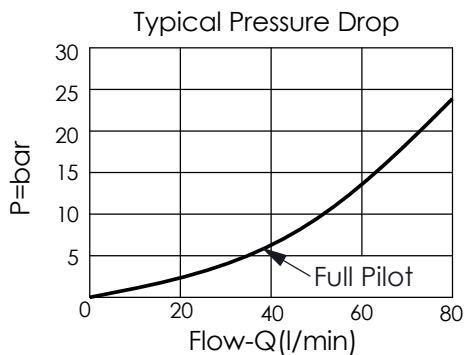


UNIT:mm



TECHNICAL DATA

Max. pressure:	350	bar
Rated flow:	60	l/min
Cavity-Tooling:	11A-3	
Installation torque:	40-50	Nm
Weight:	0.13 (Z:N, NP)	kg
	0.16 (Z:L)	kg



X OPERATION

30	2 to 1 (Free Flow) Pilot Ratio 3:1
3C	2 to 1 (Free Flow) Sealed Pilot Piston Pilot Ratio 3:1
3D	2 to 1 (Free Flow) Sealed Pilot Piston Pilot Ratio 4.2:1

Z OPTION

N	Non-adjustable
NP	Non-adjustable With stainless steel external metal components (Buna-N Seal)
L	Leakproof hex. socket screw. 

Y SPRINGS

Cracking pressure

01	0.1 bar
03	0.3 bar
10	1.0 bar
20	2.0 bar
35	3.5 bar
50	5.0 bar
70	7.0 bar