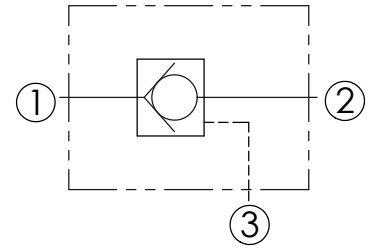
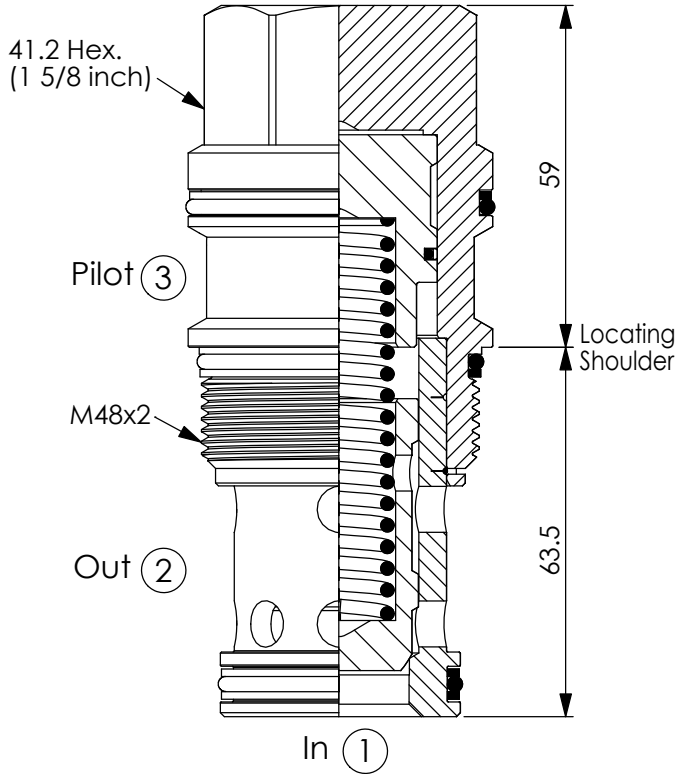


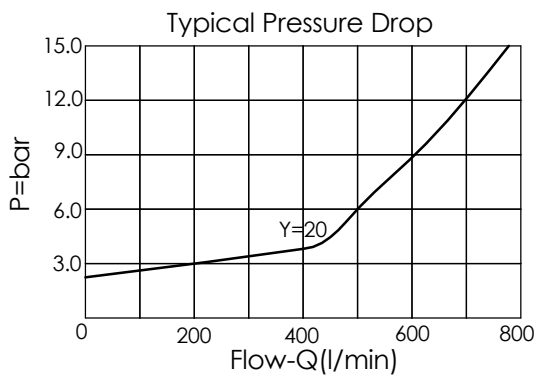
Ordering Code: **CC-19A-X-Y-Z**



TECHNICAL DATA

Max. pressure:	350	bar
Rated flow:	640	l/min
Cavity-Tooling:	19A-3	
Installation torque:	465-500	Nm
Weight:	1.15	kg

UNIT:mm



X OPERATION

30 1 to 2 (Free Flow)
Pilot Ratio 1.8:1

Y

SPRINGS

Cracking pressure

03	0.3 bar
20	2.0 bar
50	5.0 bar
70	7.0 bar

Z

OPTION

N Non-adjustable