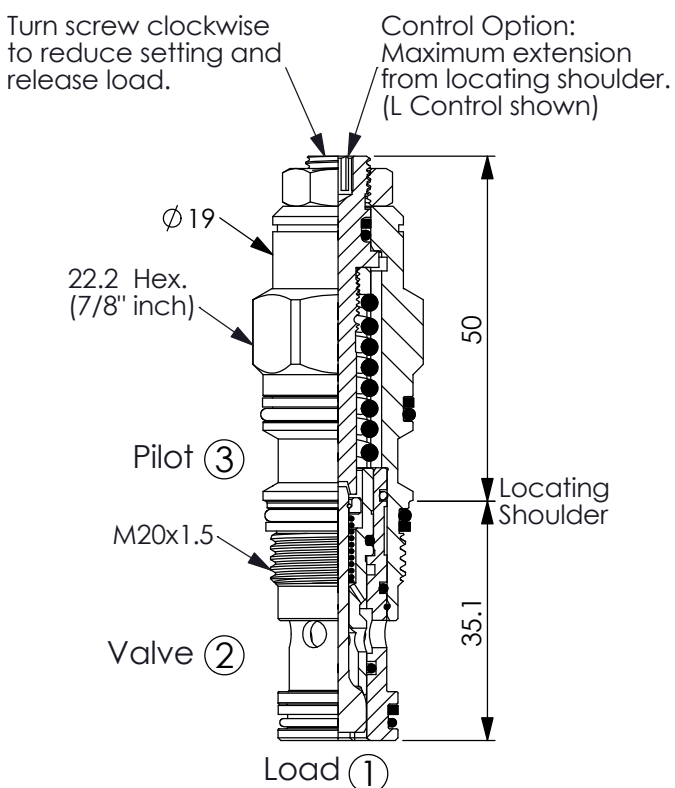
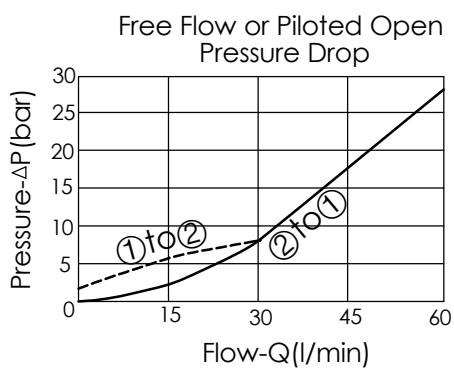


COUNTERBALANCE VALVE

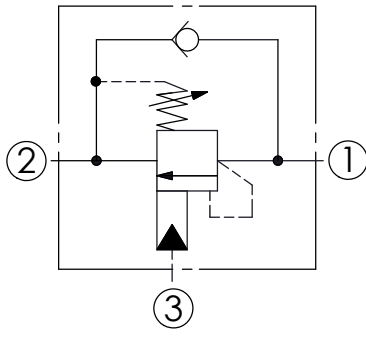
Ordering Code: **CB-11A-X-Y-Z**



UNIT:mm



| Y | SPRINGS | |
|---|--|----------------------------|
| | ADJUSTMENT RANGES(2 bar Cracking Pressure) | |
| H | 70 to 280 bar | (210 bar Standard Setting) |
| I | 25 to 105 bar | (70 bar Standard Setting) |
| SPECIAL PURPOSES(0.3 bar Cracking Pressure) | | |
| A | 70 to 280 bar | (210 bar Standard Setting) |
| B | 25 to 105 bar | (70 bar Standard Setting) |
| E | 16 to 55 bar | (25 bar Standard Setting) |



TECHNICAL DATA

| | | |
|--------------------------|--|-------|
| Max. Operating pressure: | 350 | bar |
| Max. Setting: | 280 | bar |
| Rated flow: | 60 | l/min |
| Cavity-Tooling: | 11A-3 | |
| Installation torque: | 40-50 | Nm |
| Weight: | 0.16 | kg |
| Pressure Setting: | Setting should be 1.3 times maximum load induced pressure. | |

| X | PILOT RATIO | |
|----|----------------------------------|--|
| 33 | 3 : 1 | |
| 3A | 1.5 : 1 (with sealed pilot) | |
| 3C | 3 : 1 (with sealed pilot) | |
| 3Q | 2 : 1 (with bleed through pilot) | |

| Z | OPTIONS | |
|----|---|--|
| L | Leakproof hex. socket screw. | |
| LP | Leakproof hex. socket screw. With stainless steel external metal components | |
| C | Stainless Steel Tamper Resistant Cover. | |
| T | Three-winged Handknob Kit. | |