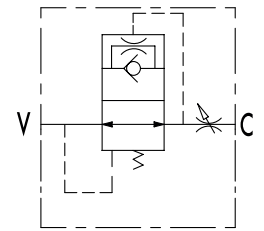
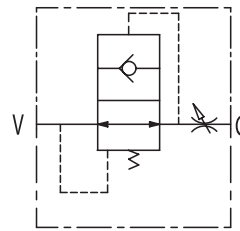
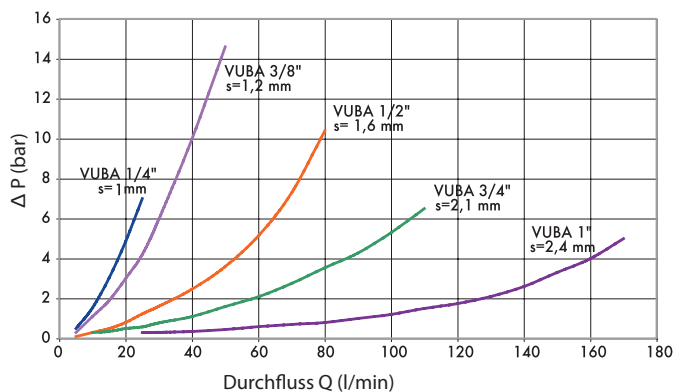


Rohrbruchsicherung

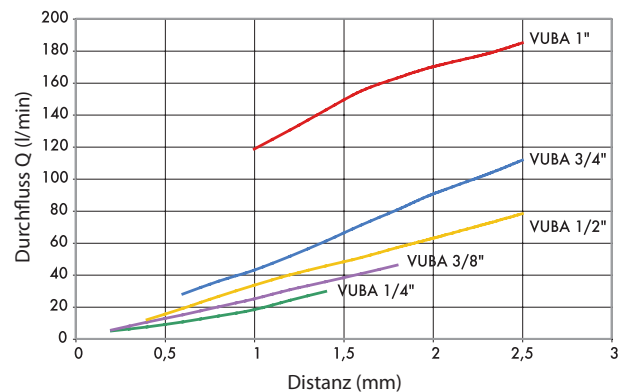
Typ VUBA



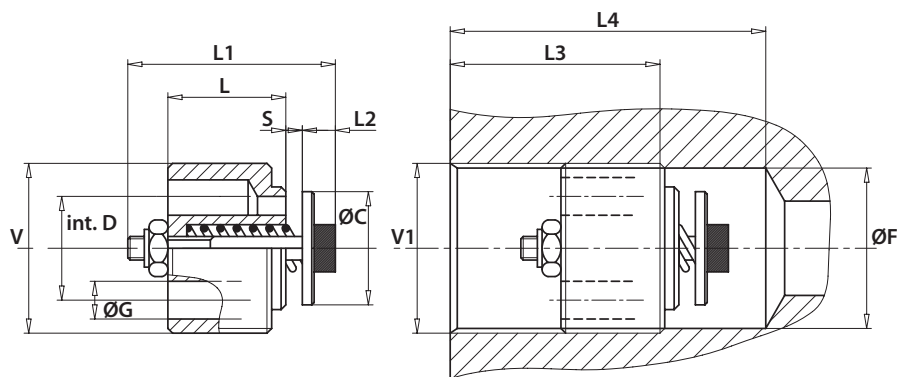
Druckabfall (Öltemperatur: 50 °C/Ölviskosität: 30 cSt)



Einstelldaten S



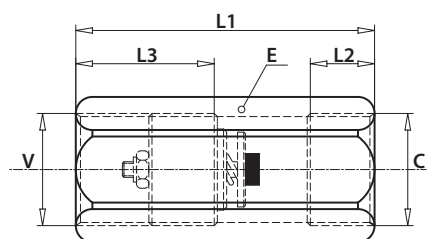
Code	Typ	max. Durchfluss (l/min)	max. Arbeitsdruck (bar)
V0770	VUBA 1/4"	20	350
V0780	VUBA 3/8"	50	350
V0790	VUBA 1/2"	80	350
V0800	VUBA 3/4"	140	350
V0810	VUBA 1"	180	350



Code	Typ	V - V1	L (mm)	L1 (mm)	L2 (mm)	L3 (mm)	L4 (mm)	ØC (mm)	ØG (mm)	ØF (mm)	ØD(i) (mm)	S (mm)	Gewicht (kg)
V0770	VUBA 1/4"	G 1/4"	8	18	5	28	35	9.5	2.5	11.75	8	1.0	0.006
V0780	VUBA 3/8"	G 3/8"	10.5	23	5	31	40	12.5	3.5	15.2	10.5	1.2	0.012
V0790	VUBA 1/2"	G 1/2"	13	29	5	33	43	15	4.5	19	12.5	1.6	0.024
V0800	VUBA 3/4"	G 3/4"	18	34	7	40	53	18.5	6	24.5	16	2.1	0.048
V0810	VUBA 1"	G 1"	20	40	8	43	66	25	7	30.5	19	2.8	0.098

Typ MFF

Code	Typ	V - C	L1 (mm)	L2 (mm)	L3 (mm)	E (mm)	Gewicht (kg)
V0771	VUBA 1/4"+MFF	G 1/4"	8	18	5	28	0.006
V0781	VUBA 3/8"+MFF	G 3/8"	10.5	23	5	31	0.012
V0791	VUBA 1/2"+MFF	G 1/2"	13	29	5	33	0.024
V0801	VUBA 3/4"+MFF	G 3/4"	18	34	7	40	0.048
V0811	VUBA 1"+MFF	G 1"	20	40	8	43	0.098



Typ MMF

Code	Typ	V - C	L1 (mm)	L2 (mm)	L3 (mm)	E (mm)	Gewicht (kg)
V0772	VUBA 1/4"+MMF	G 1/4"	8	18	5	28	0.006
V0782	VUBA 3/8"+MMF	G 3/8"	10.5	23	5	31	0.012
V0792	VUBA 1/2"+MMF	G 1/2"	13	29	5	33	0.024
V0802	VUBA 3/4"+MMF	G 3/4"	18	34	7	40	0.048
V0812	VUBA 1"+MMF	G 1"	20	40	8	43	0.098

