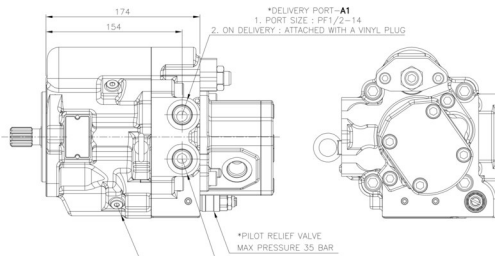
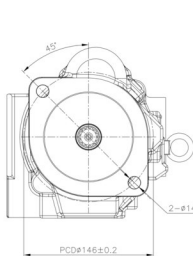
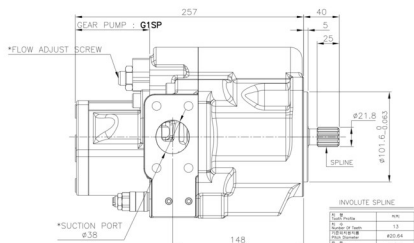
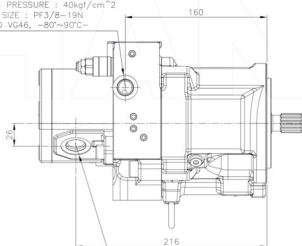


# HP2D18-9/5



\*TROCHOID PUMP : G2SP 5.1cc-A4  
1. DISCHARGE RATE : 5.1cc/rev  
2. MAX WORKING PRESSURE : 40kgf/cm<sup>2</sup>  
3. PORT SIZE : PF3/8-19N  
-50°C, ISO VG46, -80~90°C



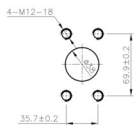
## OPERATING SPECIFICATIONS

### 1. MAX. DISPLACEMENT

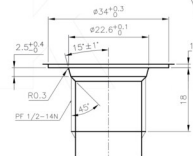
P1	25.5MPa
P2	25.5MPa
P3	20.5MPa
P4	3.9MPa

2. RATED SPEED : 2600rpm  
3. MAX WORKING PRESSURE : 25.5(260)MPa(kgf/cm<sup>2</sup>)

\*GEAR PUMP : G1SP 9cc-A3  
1. DISCHARGE RATE : 9cc/rev  
2. MAX WORKING PRESSURE : 210kgf/cm<sup>2</sup>  
3. PORT SIZE : PF1/2-14N  
-50°C, ISO VG46, -80~90°C



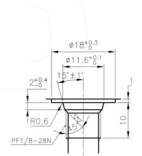
SAE 1 1/2  
FOR SUCTION PORT  
\*SCALE : 1/1



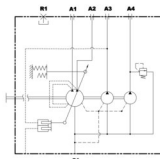
DETAIL-DELIVERY PORT A1,A2,A3  
\*SCALE : 4/1



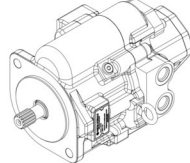
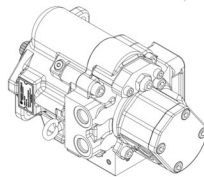
DETAIL-DELIVERY PORT A4  
\*SCALE : 4/1



DETAIL-AIR VENT PORT-R  
\*SCALE : 4/1



HYDRAULIC CIRCUIT FOR PRINCIPLE



REV.	DATE	BY	CHK