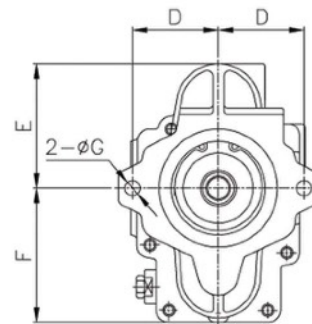
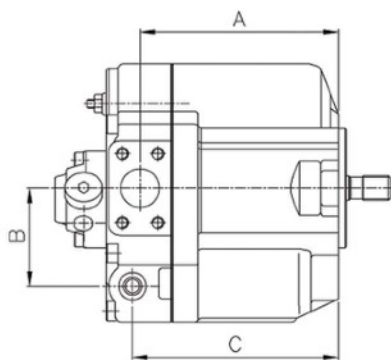
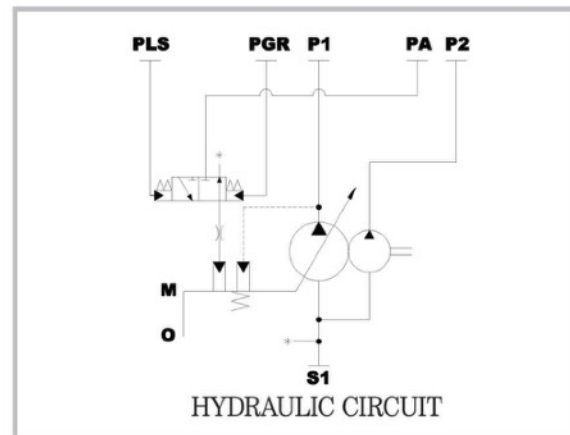


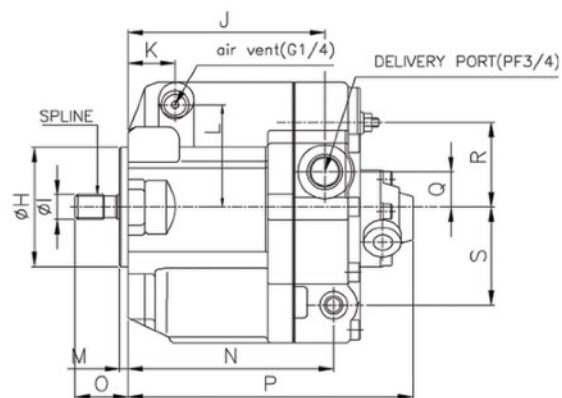
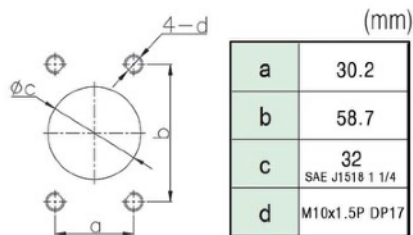
# Baggerpumpe HVK-2B-505-N

## Nachbau von Nachi PVK-2B-505-N

<b>Model</b>	<b>HVK-2B-505</b>
<b>Artikel-Nummer</b>	101151
<b>Verdrängungsvolumen (cm<sup>3</sup>/U)</b>	50
<b>max. Druck (kg/cm<sup>2</sup>)</b>	260
<b>max. Umdrehung (rpm)</b>	2400
<b>Triebwelle</b>	SAE J744 13 Z 16/32



Flange Mounting face for Suction Port



DIMENSIONS

MODEL	A	B	C	D	E	F	G	H	I	J	K	L	M	N	O	P	Q	R	S	SPLINE
HVK-2B-505	168.5	83.5	175	73	106	114	13	101.6	21.8	167.5	40	87	7	175	45	242.5	30	72	83.5	13