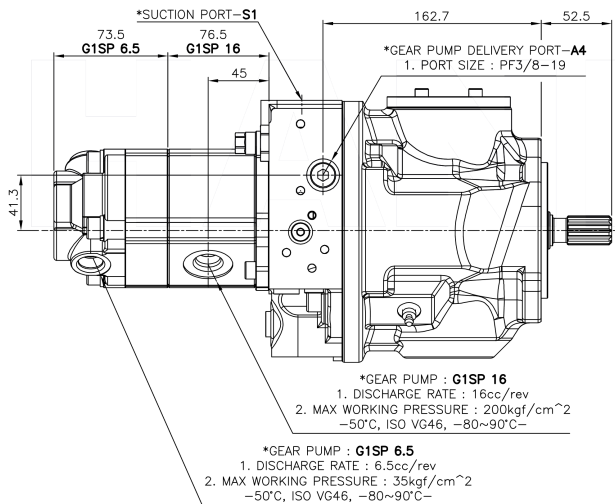
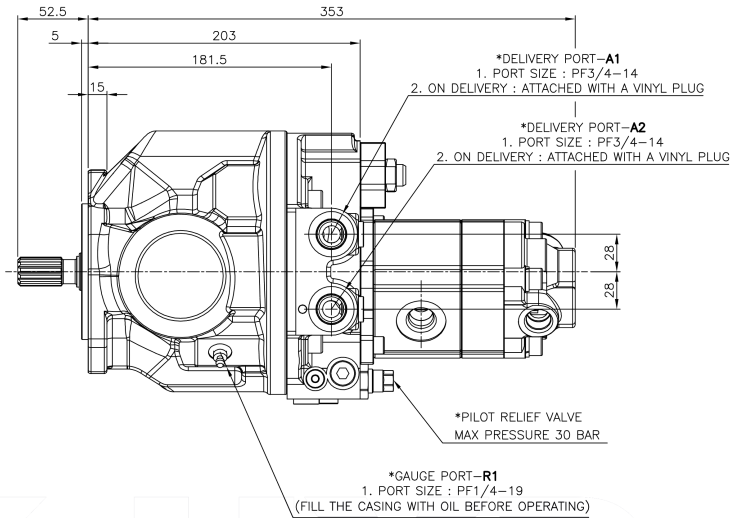
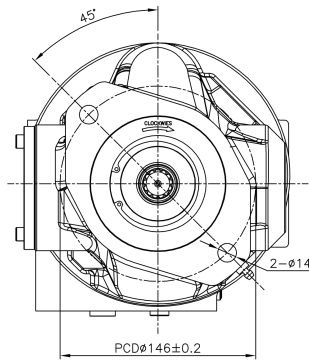
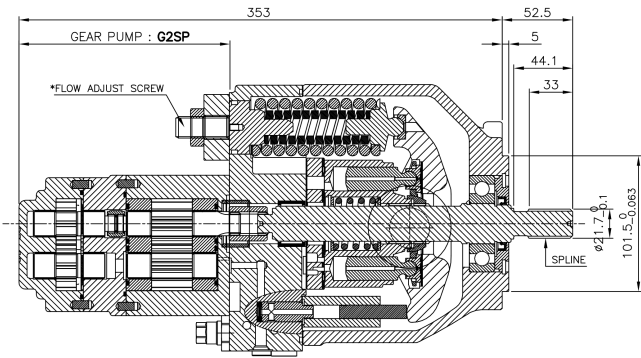


DOUBLE GEAR PUMP (16.8cc/6.5cc)



OPERATING SPECIFICATIONS

1. MAX. DISPLACEMENT

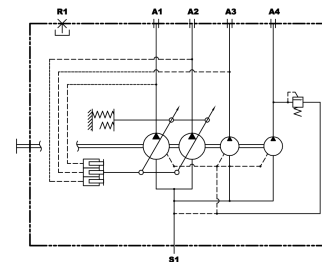
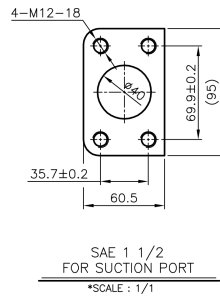
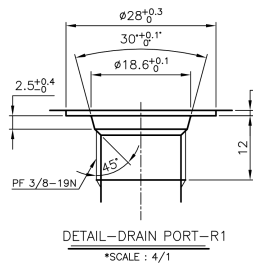
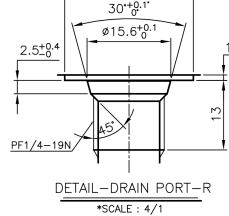
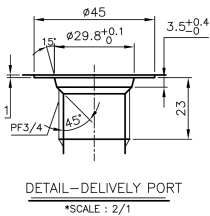
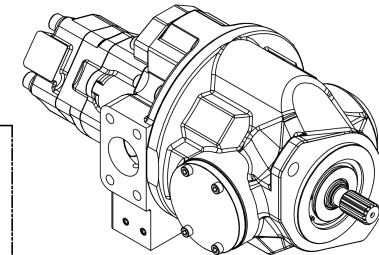
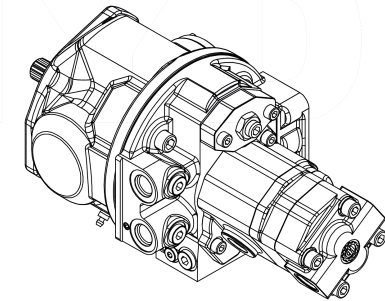
| | |
|-----------|----------------|
| P1 | 25.5MPa |
| P2 | 25.5MPa |
| P3 | 23.5MPa |
| P4 | 4.9MPa |

2. RATED SPEED : 2600rpm

3. MAX WORKING PRESSURE : 25.5(260)MPa(kgf/cm²)

INVOLUTE SPLINE 齿条齿

| | |
|-------|--------------|
| 齿条轮廓 | 齿条 |
| 齿数 | 13 |
| 齿顶圆直径 | Ø19.5 |
| 齿顶圆半径 | 1.5 |
| 齿顶圆角 | 30° |
| 齿顶圆直径 | Ø18.6~Ø18.7 |
| 齿顶圆直径 | Ø21.6~Ø21.7 |
| 齿顶圆直径 | Side Fitting |
| 齿顶圆直径 | DIN54810 |



HYDRAULIC CIRCUIT FOR PRINCIPLE